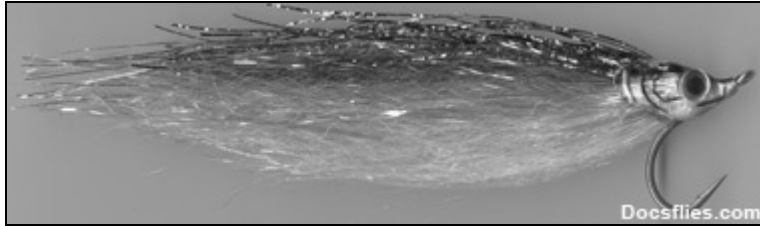


Dougherty's Herring

By: Brian Dougherty



Materials:

Hook: 6/0 2X Heavy / 2X Short Mustad C68S SS or similar

Thread: White Danville's Size A

Eyes: Mirage 3/8" Domed Easy Peel or tape eyes

Gill Plate: Epoxied marked Prismatic Silver Sili-Skin

Body:

Layer 1 - Rainbow Shimmer blended with Pearl Blue Angel Hair

Layer 2 - Rainbow Shimmer blended with Rainbow Polar Flash

Layer 3 - Each side, flair several strands of Lavender Pearl Flashabou

Layer 4 - Yellow Yak blended with Yellow Pearl Regular Shimmerflash

Layer 5 - Mackerel Slinky Blend blended with Damsel Blue Angel Hair

Layer 6 - Several strands of Light Blue Flashabou Mirage

Layer 7 - Royal Blue Slinky Fibre tied sparse

Layer 8 - 1/3 Black Slinky Fibre blended with 2/3 Royal Blue Slinky Fibre

Layer 9 - 1/32" Blue Saltwater Holographic Flash

Marker: Prismacolor Navy Blue over Grey over Light Blue, Black for detailed lines

Adhesives: Zap-A-Gap CA+ and Z-Poxy 5-Minute Epoxy

STEP 1:

Hook positioning. Angle the hook in the vise at approximately a 45 degree angle. The steep angle promotes tying one layer over the next while allowing the bend and point of the hook to act as a keel when fished.

STEP 2:

Layering. Begin thread halfway down the shank and attach Layer 1. Layer 2 - 9 will follow so as to finish with Layer 9 being the top. Layer 4, 5 and 6 will be the longest acting as the tail (~ 8-9"). Layers 1, 2, 3, 7 and 9 will be the next shortest (~ 5"). Finally, Layer 8 will be the shortest (~ 4"). Tie each layer in ahead of the previous layer's wraps.

STEP 3:

Adhesives. Once all layers are tied-in, whip-finish, cut thread and glue with Zap-A-Gap. Once dry, apply approximately a dime-sized amount of epoxy to each side of the fly. Slightly spread materials as epoxy sets promoting a wide profile. Let dry.

STEP 4:

Gill Plate. Cut an appropriate shaped gill plate for each side using Prismatic Silver Sili-Skin. Attach gill plates covering previous applied epoxy. Marker and epoxy entire gill plate. When epoxy becomes tacky apply an eye to each side. Once dry, apply fine detail to the gill plates using a black marker. The fly is finished, go fish!